

MARITIME

Ship Recycling

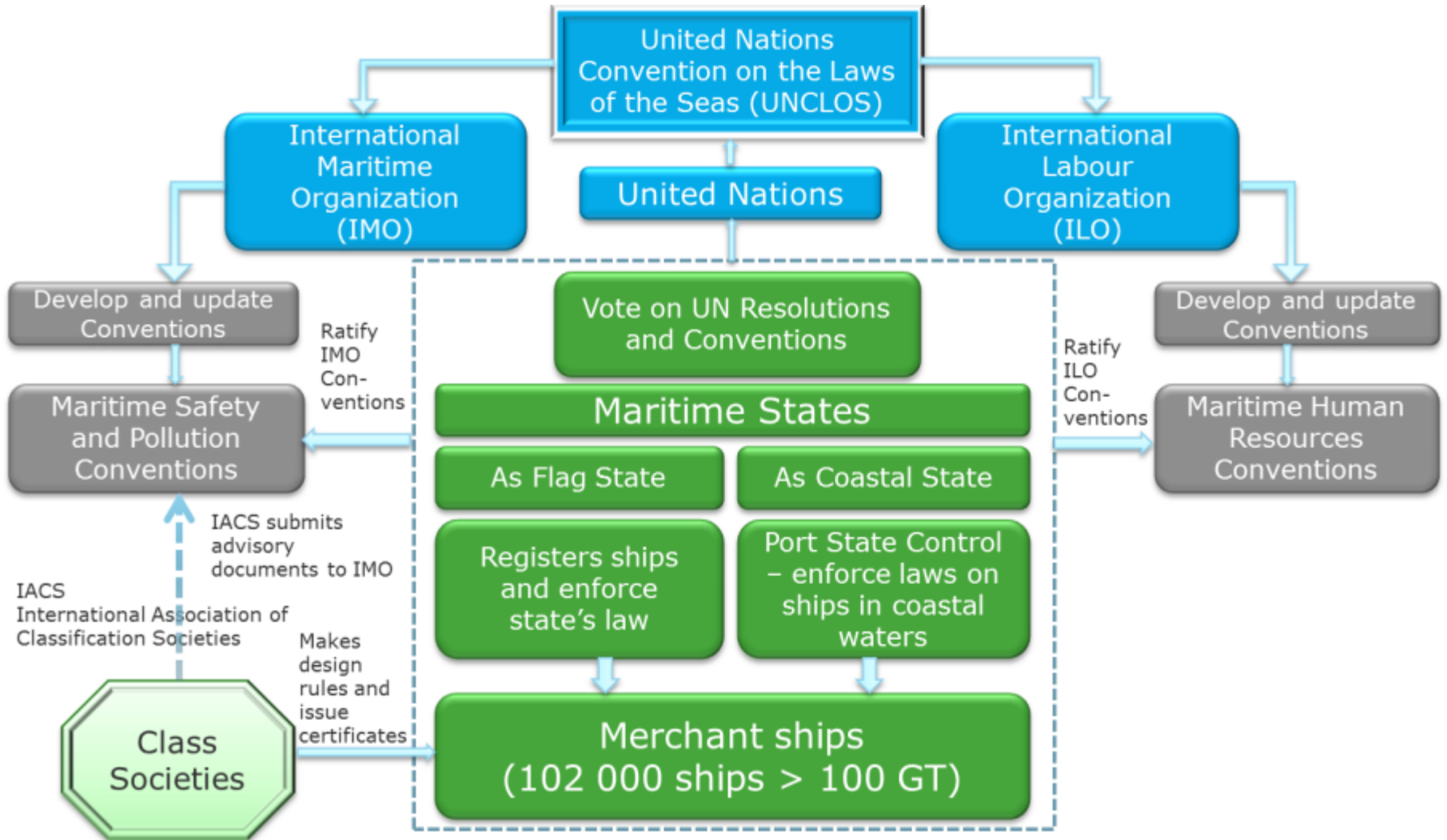
IMO Regulation – Hong Kong Convention

Eduardo Pillar

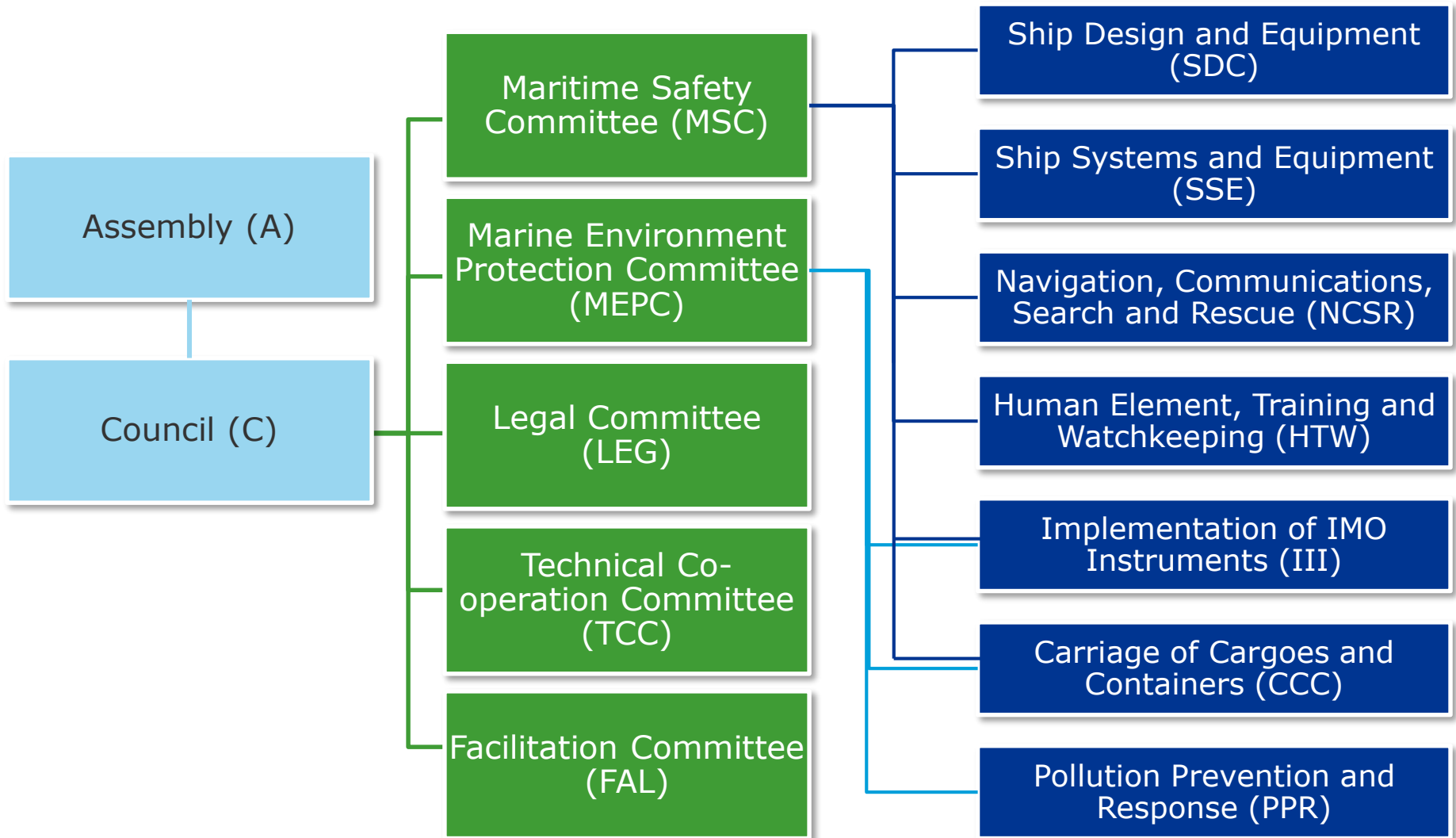
05 August 2019



International Maritime Law – An overview



Committees and Sub-committees of IMO



Convention on Ship Recycling

The convention will provide regulations for:

- The design, construction, operation and preparation of ships so as to facilitate safe and environmentally-sound recycling
- The establishment of an appropriate enforcement mechanism for ship recycling, incorporating certification and reporting requirements (for example Inventory of Hazardous Materials, previously known as Green Passport)
- The operation of ship-recycling facilities in a safe and environmentally-sound manner
- **HK Convention is not yet in force**
- **EU Ship Recycling was enforced**

Impact:

The Convention will enter into force 24 months after the date on which: 15 states; representing 40 per cent of world merchant shipping by gross tonnage the combined maximum annual ship recycling volume of those States must, during the preceding 10 years, constitute not less than 3 per cent of their combined merchant shipping tonnage



Outcome:

New international convention adopted in May 2009 in Hong Kong

Hong Kong Convention

- Application

All ships ≥ 500 GT, excluding any warships, naval auxiliary, or other ships owned or operated by a Party and used, for the time being, only on government non-commercial service

- Controls



- Legislation
- Regulation
- Standards

to ensure that SRF is designed, constructed and operate in a safe and environmentally sound manner and meet the requirements.

Hazardous...

- Management of HM
 - Identified
 - Labelled
 - Packaged
 - Removed



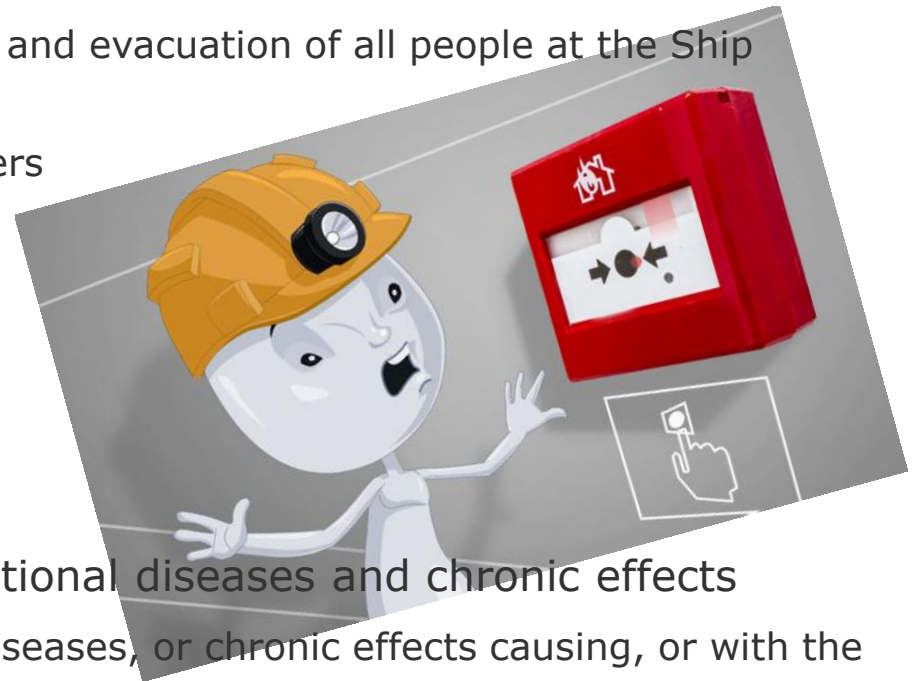
ensure safe and environmentally sound management of all HM and wastes removed. Waste management and disposal sites shall be identified to provide for the further safe and environmentally sound management of materials

- workers and vicinity



Be prepared...

- Emergency preparedness and response
 - necessary equipment and procedures
 - necessary information, internal communication and coordination
 - communication with, and information to, the relevant Competent Authority(ies)
 - first-aid and medical assistance, fire-fighting and evacuation of all people at the Ship Recycling Facility, pollution prevention
 - relevant information and training to all workers
- Worker safety and training
 - availability, maintenance and use of PPEs
 - appropriate training and familiarization
- Reporting on incidents, accidents, occupational diseases and chronic effects
 - report any incident, accident, occupational diseases, or chronic effects causing, or with the potential of causing, risks to workers safety, human health and the environment.
 - reports shall contain a description of the incident, accident, occupational disease, or chronic effect, its cause, the response action taken and the consequences and corrective actions to be taken.



- Ship Recycling Facility Plan
 - a policy ensuring workers' safety and the protection of human health
 - a system for ensuring implementation of the requirements and continuous improvement
 - identification of roles and responsibilities for employers and workers and provide appropriate information and training of workers
 - emergency preparedness and response plan;
 - a record-keeping system showing how Ship Recycling is carried out;
 - a system for reporting discharges, emissions, incidents and accidents
 - a system for reporting occupational diseases, accidents, injuries and other adverse effects on workers' safety and human health

Certification

Authority or RO based on documentation review and site inspection



DASR

Issued under the provision of the Hong Kong International Convention for the Safe and Environmentally Sound Recycling of Ships, 2009 (hereinafter referred to as "the Convention") under the authority of the Government of:

.....
(Name of State)
 by.....
(Full designation of the Competent Authority under the Convention)

Name of Ship Recycling Facility	
Distinctive Recycling Company identity No.	
Full address of Ship Recycling Facility	
Primary contact person	
Phone number	
E-mail address	
Name, address, and contact information of ownership company	
Working language(s)	

This is to verify that the Ship Recycling Facility has implemented management systems, procedures and techniques in accordance with Chapters 3 and 4 to the Annex to the Convention.

Valid for not more than 5 years

Ship & SRF

- Ship Recycling Plan
 - shall be prepared based on guidelines
 - take into account the information provided by shipowner
 - has to be submitted for approval
 - Authority has to confirm that Plan was received
 - Authority has to inform about acceptance or not of Plan

- Initial notification and reporting requirements
 - Notify the Authority(ies) with all ship's data
 - IHM
 - draft of SRP

- Reporting upon completion
 - When the partial or complete recycling of a ship is completed, a Statement of Completion shall be issued by the Ship Recycling Facility and reported to its Competent Authority(ies).



The Convention calls for **inventory data**, a list of hazardous materials onboard, for all ships being delivered to a ship recycling facility

The Inventory of Hazardous Materials ([MEPC.179\(59\)](#)) is the responsibility of the ship owner and includes 3 parts:

- Part 1 - Hazardous Materials Contained in the Ship's Structure and Equipment
- Part 2 - Operationally generated wastes
- Part 3 – Stores

In Brazil

- 
- **Labour Ministry**
 - **ANP**
 - **Maritime Authority**
 - **IBAMA**
 - **CNEN**
 - **Organization in charge**
 - ...

EU - Ship recycling overview



- Aims to end scrapping of old EU-registered vessels on third-world countries beaches. Recycling only in EU-approved facilities (worldwide inventory).
 - New EU flagged ship (contract signed after 30 December 2013): IHM shall be established, verified and kept on board
 - Existing EU flagged ships: IHM shall be established, verified and kept on board not later than 31 December 2020 (or if going for recycling after 31 December 2016)
 - Non EU flagged ships: IHM shall be available and kept on board as from 31 December 2020
 - The scrapping requirements will apply to ships at the earliest 2015 and at the latest 2018, depending on the recycling capacity of approved yards recycling 2.5 millions LDT
 - EC to report in 2016 on mechanism to safeguards against reflagging prior to recycling, legislative proposal possibly in 2017
- Enforcement measures, including penalties are to be set by member states

Impact:

Entered into force **30 December 2013** / EU Regulation [No 1257/2013](#)

EU flagged vessels, and non-EU flagged vessels when calling EU ports, are required to carry an inventory of hazardous materials



Outcome:

Ship Recycling Regulation adopted by the EU

Regulation aimed at facilitating early ratification of the Hong Kong Convention

Ship Recycling Facilities – EU Certified

- Certified
 - 30 within EU
 - 4 outside EU

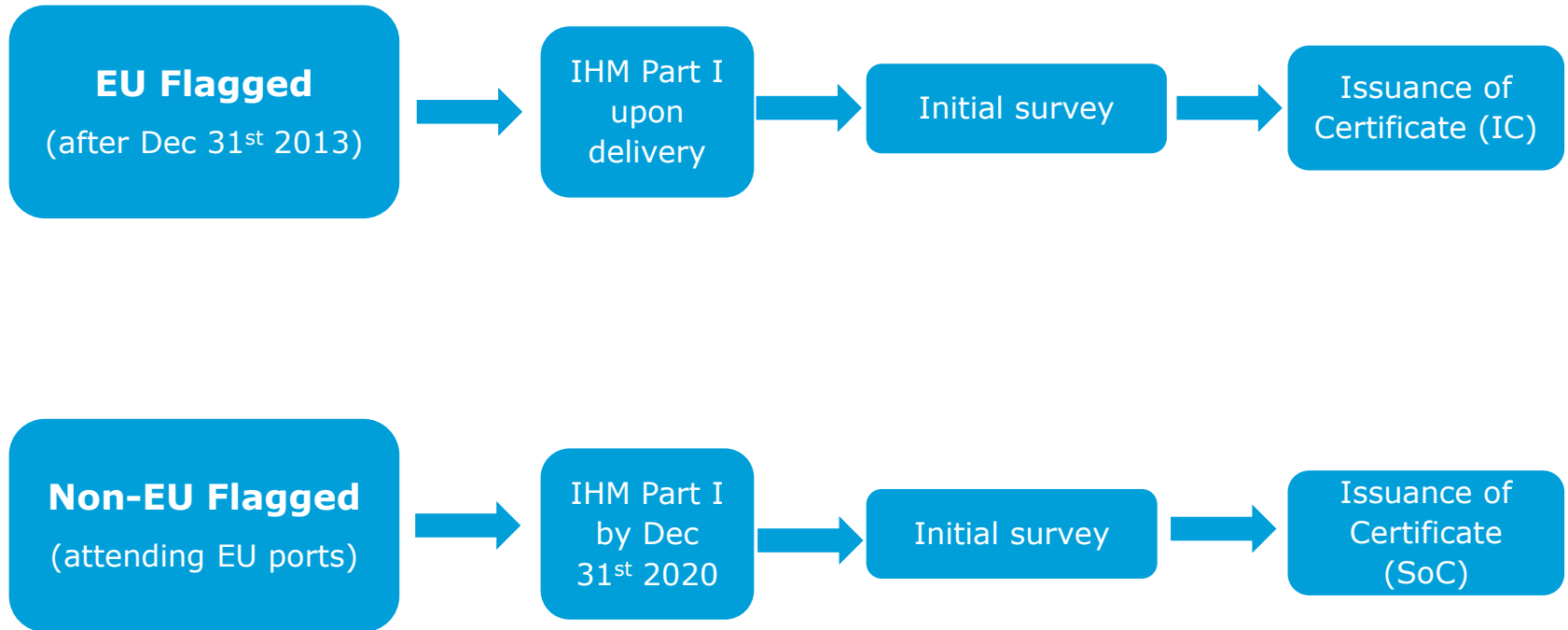
<http://ec.europa.eu/environment/waste/ships/list.htm>



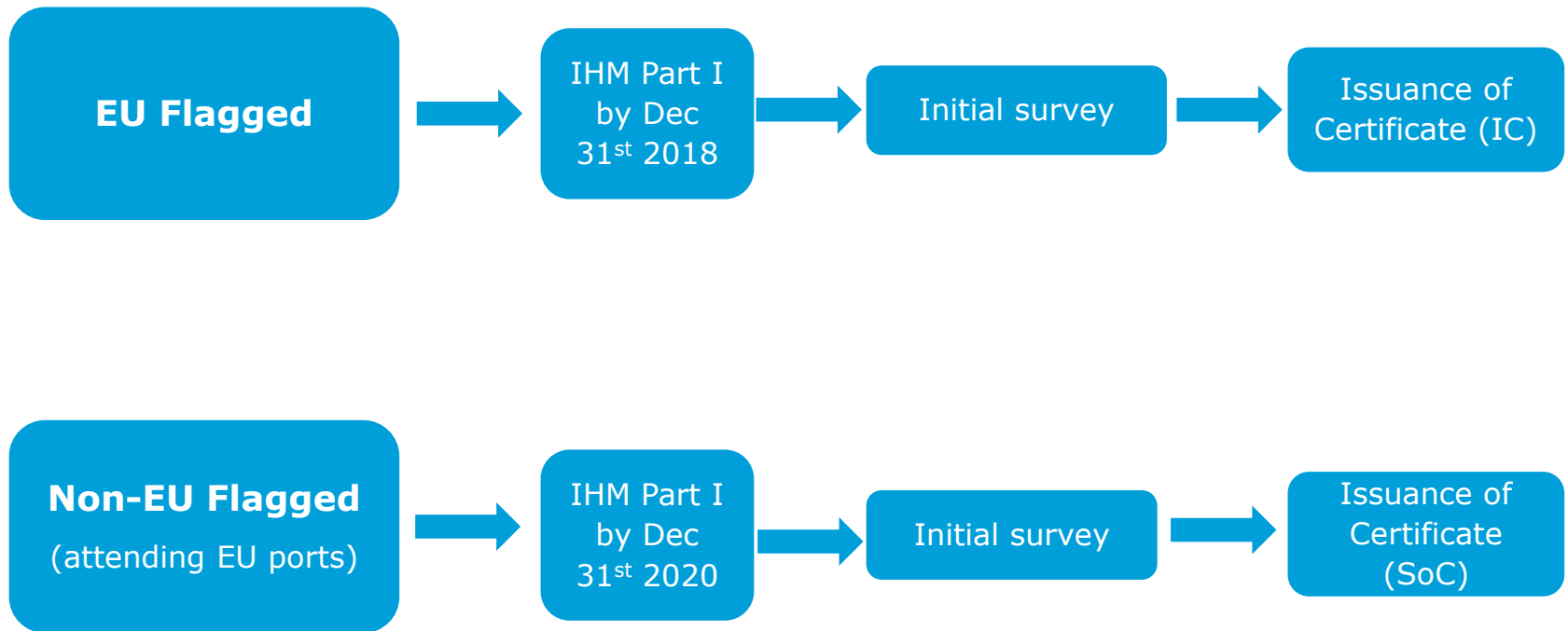
- 26 applications from outside EU

<http://ec.europa.eu/environment/waste/ships/pdf/list-of-applicants-2018-12-14.pdf>

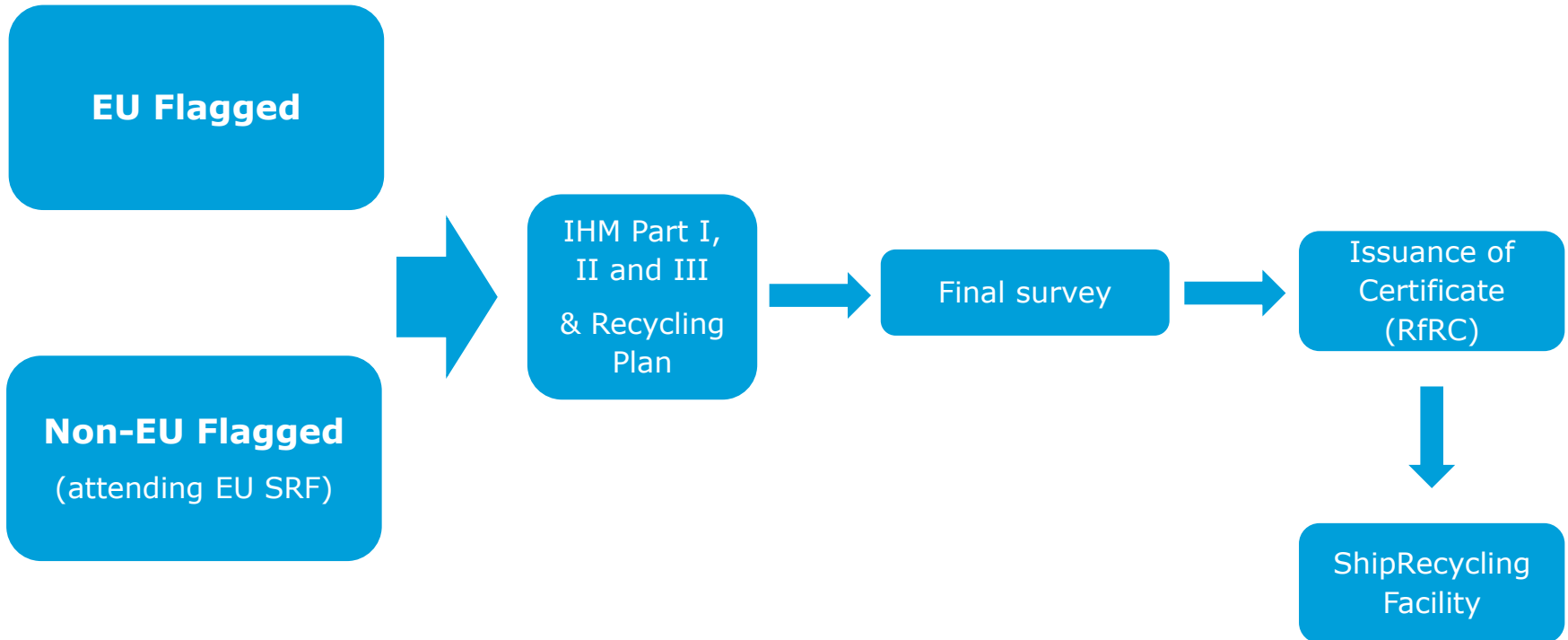
How to Comply – NB Phase



How to Comply – In Operation Phase



How to Comply – Going for recycling



Thank you!

Eduardo Pillar

eduardo.pillar@dnvgl.com

(21) 98175-1505

www.dnvgl.com

SAFER, SMARTER, GREENER

References

[MEPC.210\(63\)](#) *Guidelines for safe and environmentally sound ship recycling*

[MEPC.211\(63\)](#) *Guidelines for the authorization of ship recycling facilities*

[MEPC.196\(62\)](#) *Guidelines for the development of the ship recycling plan*

[MEPC.179\(59\)](#) *Guidelines for the development of the inventory of hazardous materials*